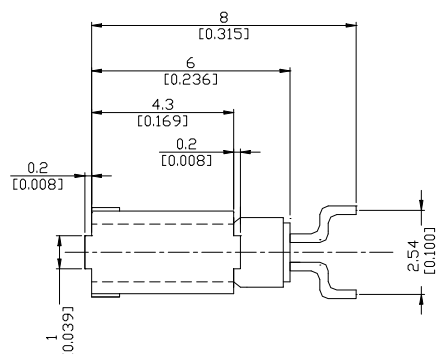
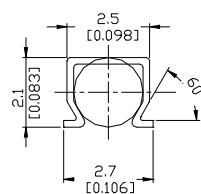


# PACKAGE DIMENSIONS

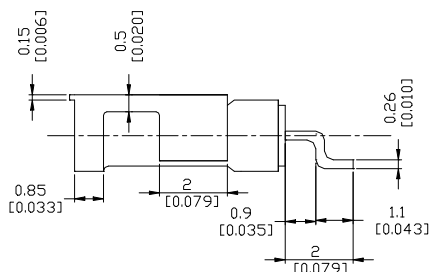
## TOP VIEW



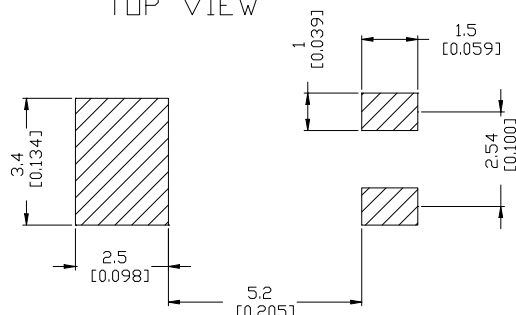
## FRONT VIEW



## SIDE VIEW



## RECOMMENDED LAND PATTERN TOP VIEW



NOTE: THIS DRAWING IS A SALES DOCUMENT FOR REFERENCE ONLY. OTHER OPTIONS ARE AVAILABLE. PLEASE CONSULT RALTRON.

CAGE CODE:  
ØVUEØ

# REVISIONS

LTR	DATE	APPROVED
A	16 JUL 07	

# SPECIFICATIONS

NOMINAL FREQUENCY: 32.768 KHZ  
 FREQUENCY TOLERANCE: ±20 PPM MAXIMUM  
 TURNOVER TEMPERATURE: +25°C ±5°C  
 TEMPERATURE CHARACTERISTIC, K (NOTE 1): -0.035 PPM/°C<sup>2</sup> (TYPICAL)  
 QUALITY FACTOR: 60,000 (TYPICAL)  
 NOMINAL LOAD CAPACITANCE: 12.5 pF  
 EQUIVALENT SERIES RESISTANCE: 65K OHMS MAXIMUM  
 DRIVE LEVEL: 1 uW MAXIMUM  
 MOTIONAL CAPACITANCE: 2.1pF  
 SHUNT CAPACITANCE: 0.9 pF TYPICAL  
 CAPACITANCE RATIO: 460 (TYPICAL)  
 AGING: ±3 PPM MAXIMUM FIRST YEAR  
 INSULATION RESISTANCE: 500 M OHMS MINIMUM  
 OPERATING TEMPERATURE RANGE: -40°C TO +85°C  
 STORAGE TEMPERATURE RANGE: -55°C TO +125°C  
 PACKAGE: 2mm x 6.5mm CYLINDRICAL METAL CAN WITH FORMED LEADS

SHOCK RESISTANCE: 3000g x 0.3ms x 1/2 SINEWAVE IN EACH OF THREE AXES

PACKAGING: 16mm TAPING, 8mm PITCH, 3000 UNITS PER REEL

NOTE 1: FREQUENCY DEVIATION AT TEMPERATURE T IS GIVEN AS:  $\Delta f/f = k(T_o - T)^2$ , WHERE K IS PARABOLIC CURVE CONSTANT

**RAMI TECHNOLOGY**

ALL DIMENSIONS ARE IN mm/inch  
UNLESS OTHERWISE SPECIFIED

DRAWN BY:

CHECKED BY: WM

APPROVED BY:

SCALE: SHEET 1 OF 1 DATE: 16 APR 08

DRAWING TITLE:

ROHS COMPLIANT

**TUNING FORK CRYSTAL UNIT  
 2x6mm SMD LEAD FORM TYPE  
 WITH CLIP REFLOW COMPATIBLE  
 32.768 KHZ, ±20 PPM**

DRAWING NUMBER: R26-32.768-12.5-X-CLIP-TR-NS1